

UP TO 55% OFF

**DON'T CHANCE IT
CHANGE IT**

SGB

hire and sale

Don't let a dodgy ladder shatter your life

Ladder Exchange 2008

HSE Health & Safety Executive

Get ready for HSE inspections with the SGB Ladder Exchange

Call us now on 0870 442 1869

Ladders – pre use checks

Things to look for

Every time you use a ladder you should do a pre-use check beforehand to make sure that it is safe for use.

A pre use check should be carried out by:

- The user;
- At the beginning of the working day; and
- After something has changed i.e. ladder dropped or moved from a dirty area to a clean area (check state or condition of feet)

The benefit of conducting daily pre-use checks is that they provide the opportunity to pick up any immediate/serious defects before they cause an accident.

1. Leaning ladders

- **Stiles need to be in good condition**
Do not use the ladder if they are bent or split - the ladder could collapse.



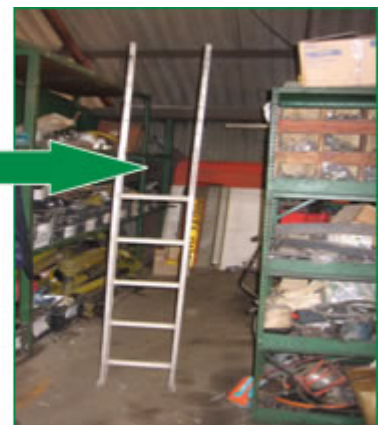
- **Check the stiles**
Do not use the ladder if they are bent or damaged - the ladder could buckle or collapse.



- **Check the feet**
Do not use the ladder if they are missing or w



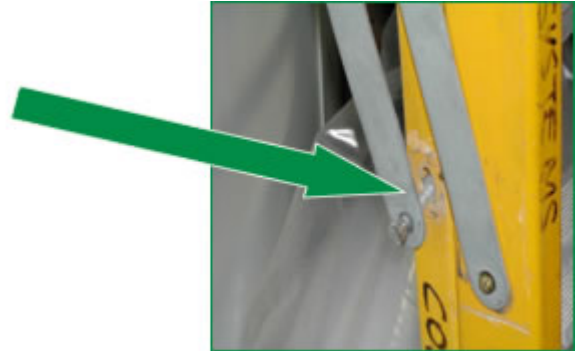
- **Check the rungs**
Do not use the ladder if they are bent, missing or loose - the ladder could become unstable.



2. Step ladders pre-use checks - things to look for

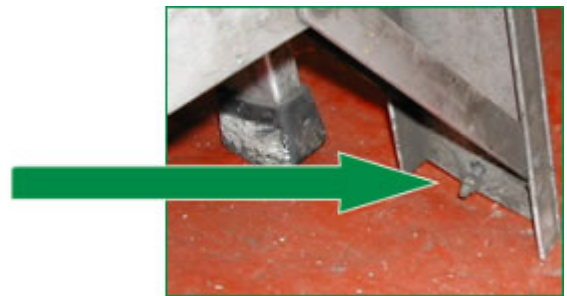
- **Check the locking bars**

Do not use the ladder if they are bent or the fixings are worn or damaged - the ladder could collapse.



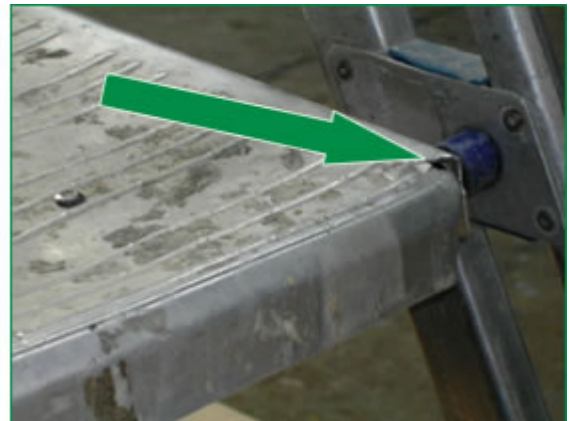
- **Check the feet**

Do not use the ladder if they are missing or worn or damaged - the ladder could slip.



- **Check the stepladder platform**

Do not use the ladder if it is split or buckled - the ladder could become unstable or collapse.



- **Check the steps or treads**

Do not use the ladder if they are contaminated - they could be slippery.

- **Check the steps**

Do not use the ladder if the fixings are loose - they could collapse.



- **Check the stiles**
Do not use the ladder if they are bent or damaged - the ladder could buckle or collapse.

